

VINSERVICE®



ITALY



BREEZE



S.T.B. for a rapid switch
 from carbonated to
 non-carbonated
 beverage

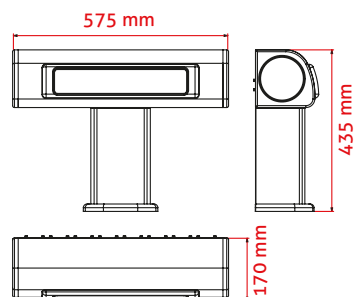
**Anodized and
 extruded aluminium**

Tower with plexiglass
 crowner for brand
 decals display or
 branded illuminated
 medallions

**Available in black
 or grey version**



DIMENSIONS



TECHNICAL DETAILS

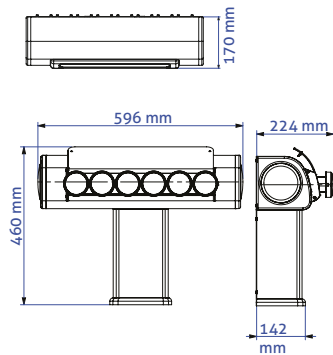




BREEZE PREMIUM



DIMENSIONS



illuminated part

red backlight

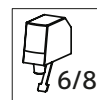
illuminated medallions

illuminated part

red backlight



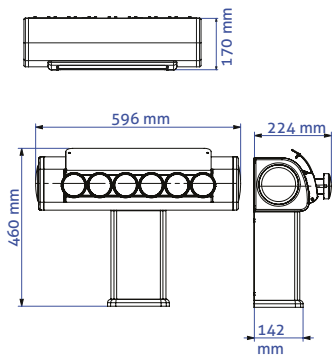
TECHNICAL DETAILS



FREEZE



DIMENSIONS



In anodized extruded aluminium
 Black or Grey color
 Up to 8 valves

Coca-Cola top panel with real ice layer!
 Energy saving solution to grow ice with Peltier cells.

With 6 led illuminated medallions and branded fish eye lenses

illuminated part

iced part

red backlight

red backlight

illuminated medallions

illuminated part



TECHNICAL DETAILS

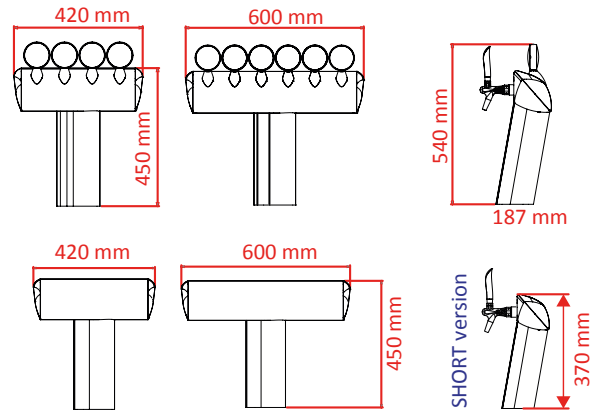


VINSERVICE®



FUSION T

PREMIUM



TECHNICAL DETAILS



Fusion T



Anodized and extruded aluminium

S.T.B. Evolution for a rapid switch from carbonated to non-carbonated beverage

Brushed metal finishing

TOUCH TOWER

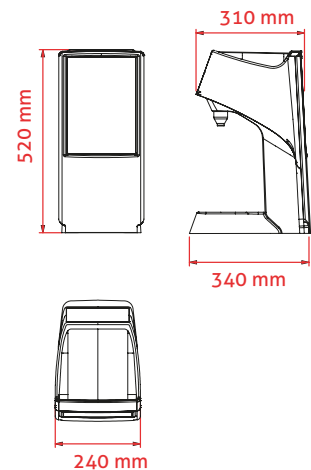
NEW **SOON AVAILABLE**

Vin Service Multiflavour valve (4 to 6 drinks from one single nozzle)

Illuminated side logos



DIMENSIONS



TECHNICAL DETAILS

7" touch screen for easy product choice

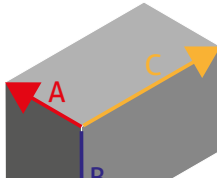




Rear view
 Illuminated logo

TECHNICAL DETAILS



compressor	coolant gas	water tank	ice bank	cooling capacity	rate of drink per minute
1/2 hp	R404A	36 lt.	12 kg.	75 lt./h	4x355 cc
IN/OUT drink temperature	housing material	voltage	carbonator	 A: 425 mm B: 635 mm C: 820 mm	
25°C 4.4°C	AISI 304 removable ABS cover	220/240V 50hz 110V-60hz 220V-60hz	1.3 lt.		

LCP 2 valves



You can choose the front part color.

You can apply your brand on the 2 sides and the front part!



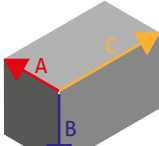


LCP 2 valves



TECHNICAL DETAILS



compressor	coolant gas	power	coils	water tank	power consumption	cooling capacity
1/4 hp	R404A	463 w	2 syrup +soda+h2o	18 lt.	260 w	40 lt./h
carbonator	IN/OUT drink temperature	rate of drink per minute	ice bank	net weight	 A: 315 mm B: 495 mm C: 670 mm	
0.7 lt.	26°C 4.4°C	2x200 cc	7 kg.	32 kg.		

Claddings

The Global Skeleton Tower concept allows to keep the technical part with valves and tubing installed and simply change the cladding.

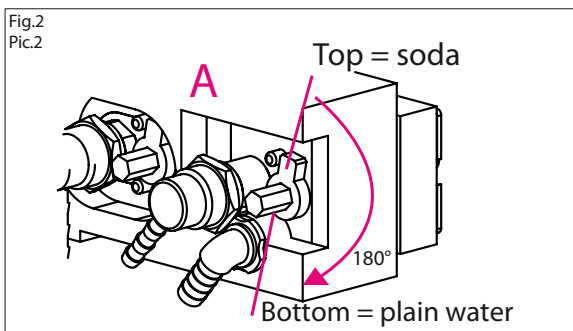


The tower image is renewed with a considerable saving (**up to 75% less than the price of a complete new tower**).

The best solution to get a brand-new tower by simply investing 25% of the tower regular price!

Global Skeleton

with Super Technical Block evolution including installed and tested python.



The Super Technical Block is a great life cost reduction solution as it allows the rapid switch of the supply of carbonated/non carbonated water to each of the post-mix valves in a few minutes right on the point of sale without having to remove or replace the inside tubings.

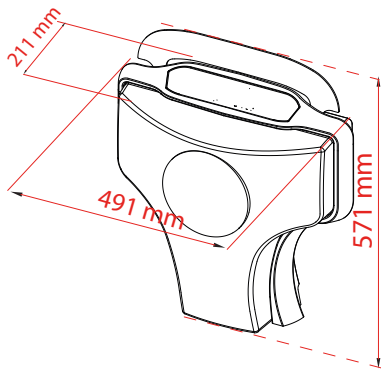
By simply turning a lever behind the valve you can dispense either a carbonated soft drink or a non carbonated beverage (tea, fruit juice).

It can be applied inside all Vin Service towers and top counter units.

Coca Cola Approved!

FENG

DIMENSIONS

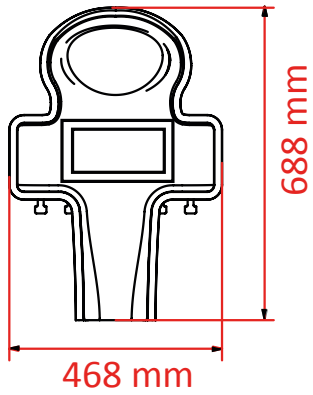


TECHNICAL DETAILS



METAL LCD

DIMENSIONS

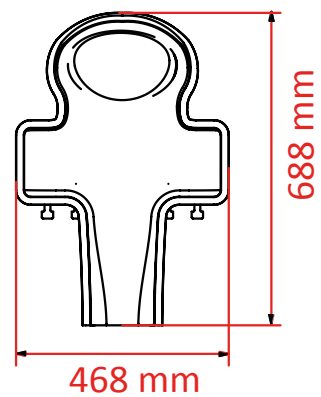


TECHNICAL DETAILS



METAL

DIMENSIONS



TECHNICAL DETAILS



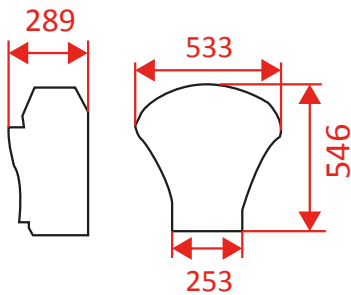
BUBBLING

exclusive **Vin service** system
 to create real air bubbles

TECHNICAL DETAILS



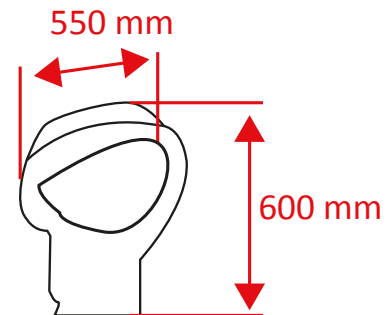
DIMENSIONS



IDEA



DIMENSIONS

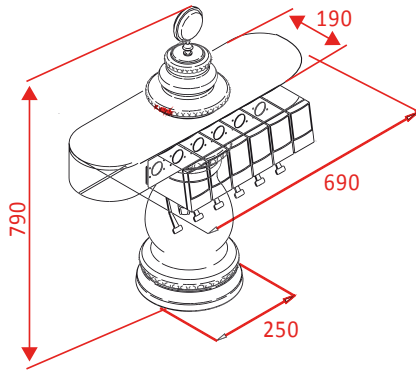


TECHNICAL DETAILS



Germania

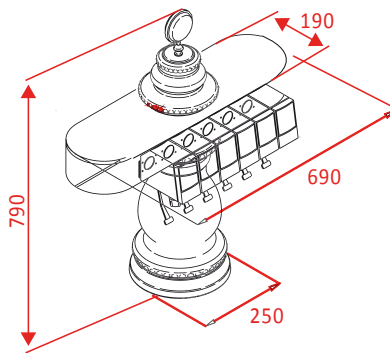
DIMENSIONS



TECHNICAL DETAILS



DIMENSIONS



TECHNICAL DETAILS



Vittoria

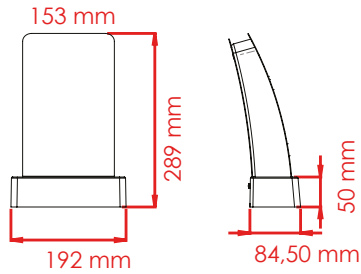


VELA bar gun holder

TECHNICAL DETAILS



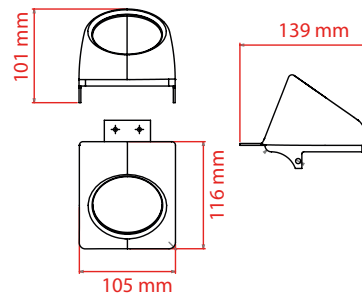
DIMENSIONS



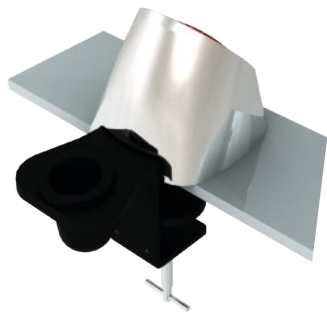
FLASH bar gun holder



DIMENSIONS

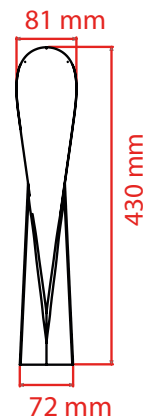


TECHNICAL DETAILS



SHIELD PRE-MIX TOWER

DIMENSIONS



TECHNICAL DETAILS



1-2-3

ICE

REMOTE POST-MIX COOLERS RANGE



150IP NEW
integrated pumps

150



**D CONDITION
APPROVED**

compressore
compressor
compresor

1/3+HP

refrigerante
coolant gas
refrigerante

R404A

potenza
power
potencia

756w
650Kcal

potenza assorbita
absorbed power
potencia absorbida

414w
hour

serpentine
coils
serpentes

6SYR+H2O
+SODA
+2PREMIX
(OPTIONAL)

vasca dell'acqua
water tank
tanque de agua

60lt.

banco di ghiaccio
ice bank
banco de hielo

25kg.

capacità di raffreddamento
cooling capacity
capacidad de enfriamiento

150
lt./h

temp.bevanda IN/OUT
IN/OUT drink temp.
temp.de la bebida IN/OUT

25°C
4.4°C

erogazione per minuto
rate of drink per minute
submin. por minuto

7x355
CC

tensione
voltage
tension

220/240
50hz
110v-60hz
220v-60hz

carbonatore
carbonator
carbonador

2.7lt.

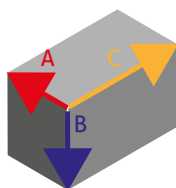
peso netto
net weight
peso neto

50kg.

carrozzeria
housing material
carrocería

AISI
430

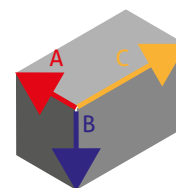
DIMENSIONS



ICE150

A: 450 mm
B: 700 mm
C: 785 mm

height including pump



ICE150IP

A: 575 mm
B: 700 mm
C: 785 mm

ICE

REMOTE POST-MIX COOLERS RANGE

250



600



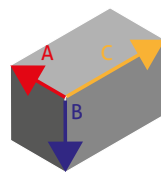
D CONDITION APPROVED

	compressore compressor compresor	refrigerante coolant gas refrigerante	potenza power potencia	potenza assorbita absorbed power potencia absorbida	serpentine coils serpentine	vasca dell'acqua water tank tanque de agua	banco di ghiaccio ice bank banco de hielo	capacità di raffreddamento cooling capacity capacidad de enfriamiento	temp.bevanda IN/OUT IN/OUT drink temp. temp.de la bebida IN/OUT	erogazione per minuto rate of drink per minute submin. por minuto	tensione voltage tension	carbonatore carbonator carbonador	peso netto net weight peso neto
ICE 250	3/4HP	R404A	1476w 1269Kcal	785w hour	8SYR+H2O +SODA +2PREMIX (OPTIONAL)	90lt.	40kg.	250 lt./h	25°C 4.4°C	11x355 CC	220/240 50hz 110v-60hz 220v-60hz	2.7lt.	75kg.
ICE 600	1 1/4 HP	R404A	2717w 2336Kcal	1233w hour	12SYR+H2O +SODA +2PREMIX (OPTIONAL)	150lt.	75kg.	480 lt./h	25°C 4.4°C	25x355 CC	220/240 50hz 110v-60hz 220v-60hz	2.7lt.	86kg.

carrozzeria
housing material
carrocera

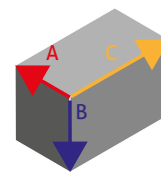
AISI
430

DIMENSIONS



ICE250
A: 540 mm
B: 820 mm
C: 805 mm

height including wheels



ICE600
A: 600 mm
B: 870 mm
C: 900 mm



EASY 110



D CONDITION APPROVED



	compressor	coolant gas	power W - Kcal	power consumption	coils	water tank	ice bank	cooling capacity	temperature of drink IN/OUT	rate of drink per minute	voltage	net weight	dimension A height B depth C width	recirculation pump
HE 40	1/4HP	R404A	463W 398Kcal	260w hour	1-3 11-05mt	18lt.	9kg.	40lt. hour	25C° 6C°	2x200 cc	220/240 50hz 110v-60hz 220v-60hz	25kg	A 600mm B 350mm C 300mm	6/10
HE 60	1/4HP	R404A	463W 398Kcal	260w hour	1-4 12-6mt	25lt.	12kg.	60lt. hour	25C° 6C°	5x200 cc	220/240 50hz 110v-60hz 220v-60hz	34kg	A 490mm B 560mm C 360mm	8/10 Ø37.5
HE 90	1/3HP	R404A	530W 435Kcal	311w hour	1-4 17-9mt	36lt.	14kg.	90lt. hour	25C° 6C°	7x200 cc	220/240 50hz 110v-60hz 220v-60hz	35kg	A 720mm B 390mm C 390mm	8/13 Ø52.5
HE 100	1/3HP	R404A	530W 435Kcal	311w hour	1-4 17-9mt	36lt.	14kg.	100lt. hour	25C° 6C°	8x200 cc	220/240 50hz 110v-60hz 220v-60hz	35kg	A 490mm B 600mm C 400mm	8/13 Ø52.5
EASY 110	1/3HP	R404A	530W 435Kcal	311w hour	1-4 17-9mt	36lt.	14kg.	100lt. hour	25C° 6C°	8x200 cc	220/240 50hz 110v-60hz 220v-60hz	35kg	A 490mm B 600mm C 400mm	8/13 Ø52.5
HE 120	1/2HP	R404A	756W 650Kcal	415w hour	1-8 22-11mt	50lt.	25kg.	120lt. hour	25C° 6C°	10x200 cc	220/240 50hz 110v-60hz 220v-60hz	50kg	A 800mm B 450mm C 450mm	8/13 Ø52.5
HE 140	1/2HP	R404A	756W 650Kcal	415w hour	1-8 22-11mt	50lt.	25kg.	140lt. hour	25C° 6C°	12x200 cc	220/240 50hz 110v-60hz 220v-60hz	50kg	A 530mm B 700mm C 450mm	8/13 Ø52.5
HE 250	3/4HP	R404A	1476W 1279Kcal	785w hour	1-8/10 23-15mt	90lt.	40kg.	250lt. hour	25C° 6C°	20x200 cc	220/240 50hz 110v-60hz 220v-60hz	75kg	A 870mm B 820mm C 520mm	10/18
HE 600	1 1/4 HP	R404A	2017W 2236Kcal	1233w hour	1-12 23-20mt	150lt.	75kg.	480lt. hour	25C° 6C°	40x200 cc	220/240 50hz 110v-60hz 220v-60hz	86kg	A 870mm B 920mm C 600mm	10/18

** height including pump

HOUSING MATERIAL: Steel Plast orange or AISI430. HE250 and HE600 only AISI430

cooling unit with CO₂ compressor with zero impact on the environment



Newly conceived sealed cooling circuit with improved performance and lower power consumption

D CONDITION



COMPRESSORE
COMPRESSOR
COMPRESOR

1/2HP

REFRIGERANTE
COOLANT
REFRIGERANTE

R744

POTENZA IN W - Kcal
POWER IN W - Kcal
POTENCIA EN W - Kcal

**930w
799Kcal**

POTENZA ASSORBITA
ABSORBED POWER
POTENCIA ABSORBIDA

660w

SERPENTINE
COILS
SERPENTINES

**6syr+H₂O
+soda
+2premix
(optional)**

VASCA DELL'ACQUA
WATER TANK
TANQUE DE AGUA

60 lt.

BANCO DI GHIACCIO
ICE BANK
BANCO DE HIELO

25 Kg

CAPACITA' DI
RAFFREDDAMENTO
COOLING CAPACITY
CAPACIDAD DE
ENFRIAMIENTO

**150 lt.
hour**

TEMP. BEVANDA IN/OUT
IN/OUT TEMP. OF DRINK
TEMP. DE LA BEBIDA
EN ENTRADA Y SALIDA

**25C°
4.4C°**

EROGAZIONE MINUTO
RATE OF DRINK PER MIN.
SUBMIN. POR MINUTO

**6x355
cc**

TENSIONE
VOLTAGE
TENSION

**220/240 50hz
110v - 60hz
220v-60hz**

CARBONATORE
CARBONATOR
CARBONADOR

2.7 lt.

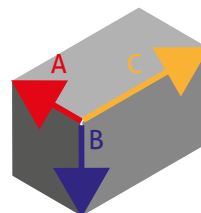
PESO NETTO
NET WEIGHT
PESO NETO

65 kg

CARROZZERIA
HOUSING MATERIAL
CARROCEA

AISI 430

DIMENSIONS The Height includes pumps



A: 475 mm

B: 715 mm

C: 810 mm

VINSERVICE®



VIN SERVICE DISPENSING GROUP

Via G. Falcone 26/34 - 24050 Zanica (BG) Italy

Phone: +39 035 672 361 Fax: +39 035 672 699

info@vinservice.it - www.vinservice.it



Coca-Cola®

Vin Service si riserva il diritto di modificare i prodotti illustrati in qualsiasi momento
Vin Service reserves the right to change at any time the products shown

REV 20150309



facebook



follow us