

# VINSERVICE®





**S.T.B. for a rapid switch  
 from carbonated to  
 non-carbonated  
 beverage**



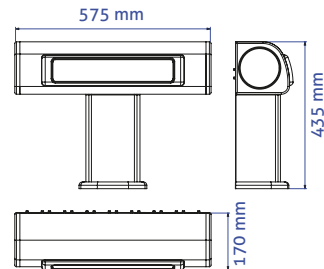
**Anodized and  
 extruded aluminium**

**Tower with plexiglass  
 crowner for brand  
 decals display or  
 branded illuminated  
 medallions**

**Available in blue  
 or grey version**



**DIMENSIONS**



**TECHNICAL DETAILS**





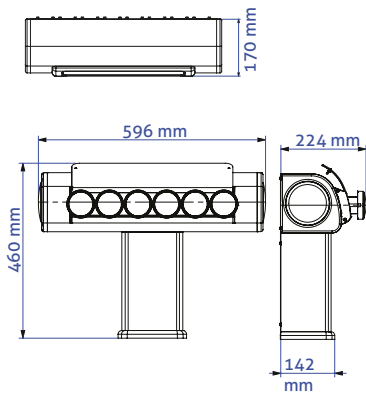
VINSERVICE®



BREEZE PREMIUM



DIMENSIONS



illuminated part

blue backlight

illuminated medallions

illuminated part

blue backlight



TECHNICAL DETAILS





In anodized extruded aluminium

Blue or Grey color

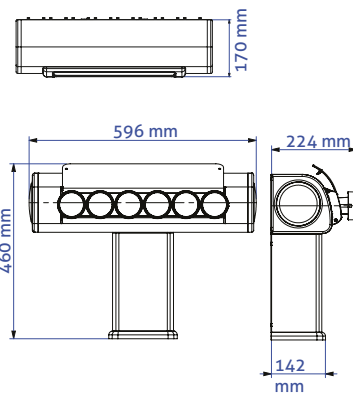
Up to 8 valves

**Pepsi-Cola top panel with real ice layer!**

Energy saving solution to grow ice with Peltier cells.

**With 6 led illuminated medallions and branded fish eye lenses**

**DIMENSIONS**



**TECHNICAL DETAILS**





**Premium**

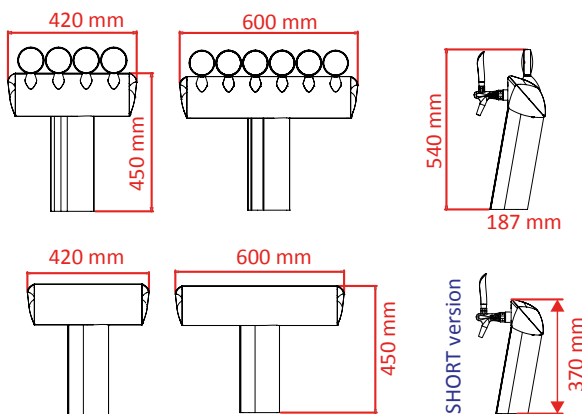


**T short version**



**T blue**

**DIMENSIONS**



**TECHNICAL DETAILS**



**Anodized and extruded aluminium**  
**S.T.B. Evolution for a rapid switch**  
**from carbonated to non-carbonated**  
**beverage**  
**Brushed metal finishing**



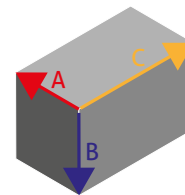
# LCP2 2 VALVES



## TECHNICAL DETAILS



compressor	coolant gas	power	coils	water tank	power consumption	cooling capacity
1/4 hp	R404A	463 w	2 syrup +soda+h2o	18 lt.	260 w	40 lt./h
carbonator	IN/OUT drink temperature	rate of drink per minute	ice bank	net weight		
0.7 lt.	26°C 4.4°C	2x200 cc	7 kg.	32 kg.		



A: 315 mm  
B: 495 mm  
C: 670 mm



You can choose the front part color.  
You can apply your brand on the 2 sides and the front part!

# CALIFORNIA TOP



Rear view  
Illuminated logo

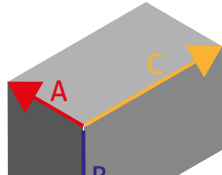


# CALIFORNIA 2000



## TECHNICAL DETAILS

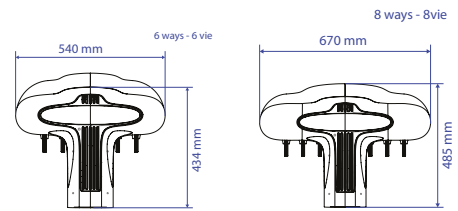


compressor	coolant gas	water tank	ice bank	cooling capacity	rate of drink per minute
<b>1/2 hp</b>	<b>R404A</b>	<b>36 lt.</b>	<b>12 kg.</b>	<b>75 lt./h</b>	<b>4x355 cc</b>
IN/OUT drink temperature	housing material	voltage	carbonator	 <b>A: 425 mm</b> <b>B: 635 mm</b> <b>C: 820 mm</b>	
<b>25°C</b> <b>4.4°C</b>	<b>AISI 304</b> <b>removable</b> <b>ABS cover</b>	<b>220/240V</b> <b>50hz</b> <b>110V-60hz</b> <b>220V-60hz</b>	<b>1.3</b> <b>lt.</b>		

# MAX COUPE'



## DIMENSIONS



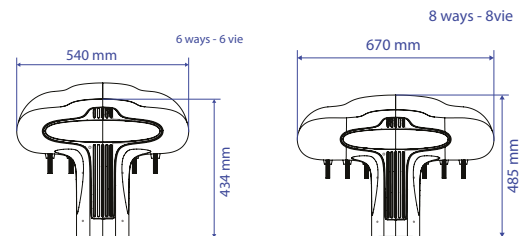
## TECHNICAL DETAILS



# COUPE'



## DIMENSIONS



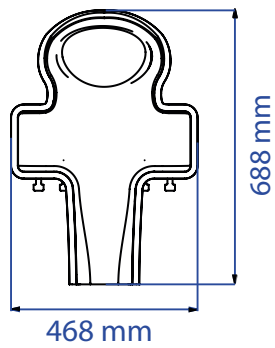
## TECHNICAL DETAILS





# SPACE LCD

## DIMENSIONS



## TECHNICAL DETAILS

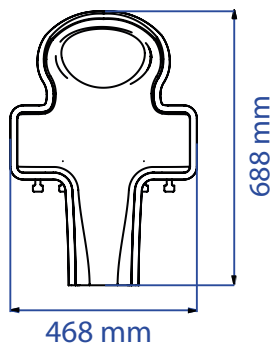


TFT LCD 7" Colour display;  
Video player (MPEG-4, DIVX, XVID);  
Photo (Jpeg, slideshow, player);  
Audio (MP3);  
USB and Memory card  
(SD/SDHC - MMC)



# SPACE

## DIMENSIONS



## TECHNICAL DETAILS



Illuminated part

Illuminated part



# GLOBE



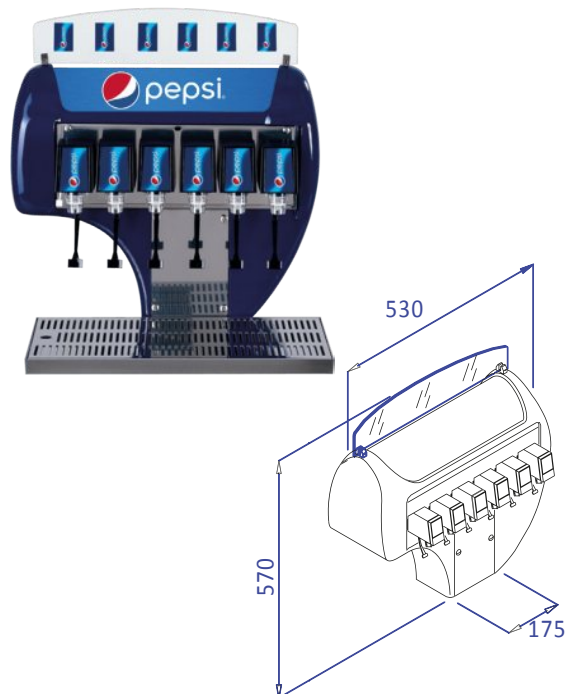
## TECHNICAL DETAILS



# NEW AGE

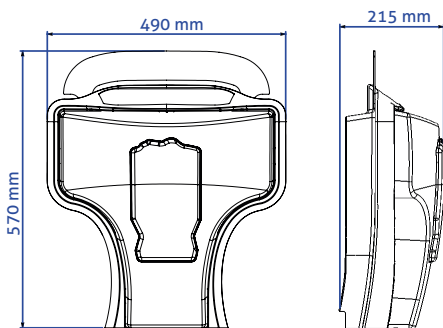


## TECHNICAL DETAILS





**DIMENSIONS**

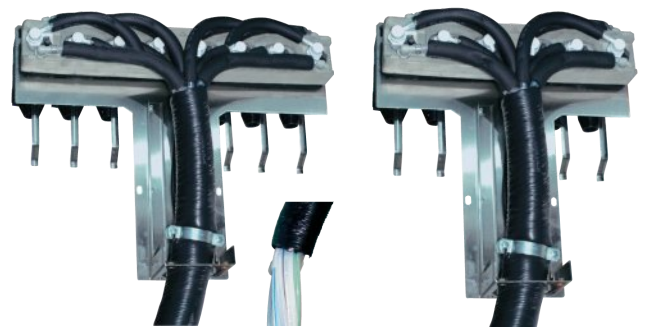
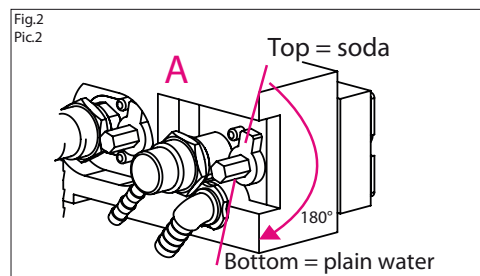


**TECHNICAL DETAILS**



**Universal skeleton**

with Super Technical Block evolution including installed and tested python.



The Super Technical Block is a great life cost reduction solution as it allows the rapid switch of the supply of carbonated/non carbonated water to each of the post-mix valves in a few minutes right on the point of sale without having to remove or replace the inside tubings.

By simply turning a lever behind the valve you can dispense either a carbonated soft drink or a non carbonated beverage (tea, fruit juice).

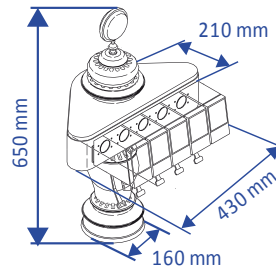
It can be applied inside all Vin Service towers and top counter units.

**Pepsi Cola Approved!**



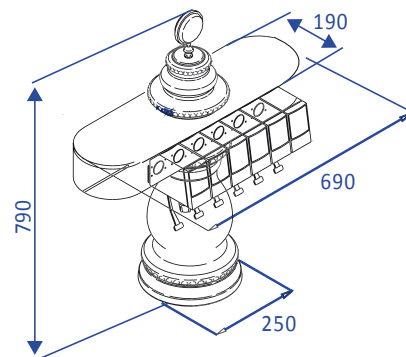
# VITTORIA

## TECHNICAL DETAILS



# NOSTALGIA

## TECHNICAL DETAILS

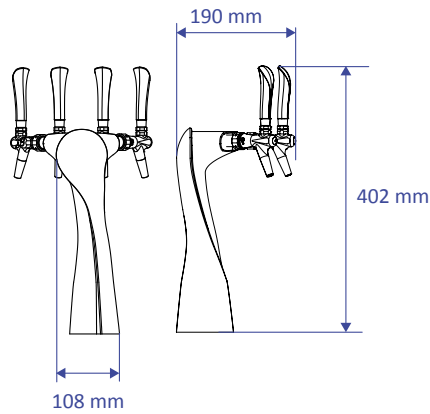


# MINI LUCKY

## TECHNICAL DETAILS



## DIMENSIONS



# bar gun holder

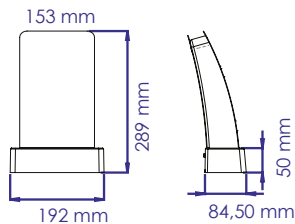
# SPARK

1605VINWU06.000



Pre-mix bar gun.

## DIMENSIONS



## TECHNICAL DETAILS



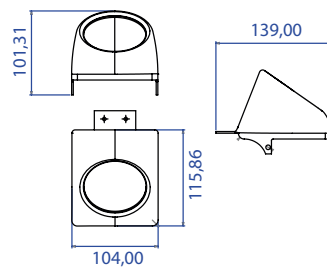
# FLASH

1605POSMX86.000



Post-mix bar gun.

## DIMENSIONS



## TECHNICAL DETAILS



# ICE

REMOTE POST-MIX  
COOLERS RANGE

## R404A

**150IP**  
integrated pumps

**150**



**INTELLICARB  
APPROVED!**

compressore  
compressor  
compresor

1/3+HP

refrigerante  
coolant gas  
refrigerante

R404A

potenza  
power  
potencia

756w  
650Kcal

potenza assorbita  
absorbed power  
potencia absorbida

414w  
hour

serpentine  
coils  
serpentes

6SYR+H2O  
+SODA  
+2PREMIX  
(OPTIONAL)

vasca dell'acqua  
water tank  
tanque de agua

60lt.

banco di ghiaccio  
ice bank  
banco de hielo

25kg.

capacità di raffreddamento  
cooling capacity  
capacidad de enfriamiento

150  
lt./h

temp.bevanda IN/OUT  
IN/OUT drink temp.  
temp.de la bebida IN/OUT

25°C  
4.4°C

erogazione per minuto  
rate of drink per minute  
submin. por minuto

7x355  
CC

tensione  
voltage  
tension

220/240  
50hz  
110v-60hz  
220v-60hz

carbonatore  
carbonator  
carbonador

2.7lt.

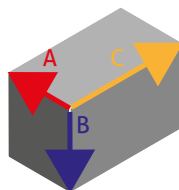
peso netto  
net weight  
peso neto

50kg.

carrozzeria  
housing material  
carrocería

AISI  
430

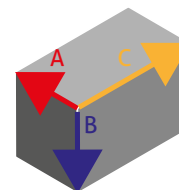
DIMENSIONS



ICE150

A: 450 mm  
B: 700 mm  
C: 785 mm

height including pump



ICE150IP

A: 575 mm  
B: 700 mm  
C: 785 mm



**ICE**  
REMOTE POST-MIX  
COOLERS RANGE

**R404A**

**250**



**600**



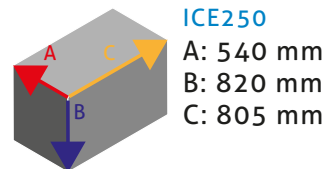
**INTELLICARB  
APPROVED!**

	compressore compressor compresor	refrigerante coolant gas refrigerante	potenza power potencia	potenza assorbita absorbed power potencia absorbida	serpentine coils serpentine	vasca dell'acqua water tank tanque de agua	banco di ghiaccio ice bank banco de hielo	capacità di raffreddamento cooling capacity capacidad de enfriamiento	temp. bevanda IN/OUT IN/OUT drink temp. temp. de la bebida IN/OUT	erogazione per minuto rate of drink per minute submin. por minuto	tensione voltage tension	carbonatore carbonator carbonador	peso netto net weight peso neto
<b>ICE 250</b>	3/4 HP	R404A	1476w 1269Kcal	785w hour	8SYR+H2O +SODA +2PREMIX (OPTIONAL)	90lt.	40kg.	250 lt./h	25°C 4.4°C	11x355 CC	220/240 50hz 110v-60hz 220v-60hz	2.7lt.	75kg.
<b>ICE 600</b>	1 1/4 HP	R404A	2717w 2336Kcal	1233w hour	12SYR+H2O +SODA +2PREMIX (OPTIONAL)	150lt.	75kg.	480 lt./h	25°C 4.4°C	25x355 CC	220/240 50hz 110v-60hz 220v-60hz	2.7lt.	86kg.

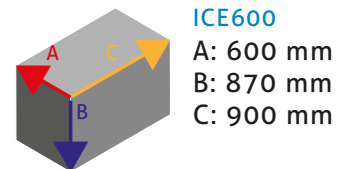
carrozzeria  
housing material  
carrocera

**AISI  
430**

**DIMENSIONS**



**height including wheels**





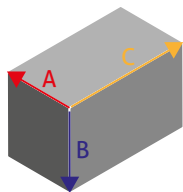
**ICE FREE 150 IP**  
integrated pumps



**ICE FREE 150**

	compressor	coolant gas	power W - Kcal	power consumption	coils	water tank	ice bank
<b>150</b> <b>150IP</b>	1/2HP	R290A	798W 686Kcal	381w hour	6SYR+H2O +SODA +2PREMIX (OPTIONAL)	60 lt.	20kg.
<b>250</b>	3/4HP	R290A	1894W 2202Kcal	900w hour	8SYR+H2O +SODA +2PREMIX (OPTIONAL)	90 lt.	40kg.
<b>PREMIUM</b> <b>250</b>	3/4HP	R290A	1894W 2202Kcal	900w hour	8SYR+H2O +SODA +2PREMIX (OPTIONAL)	90 lt.	40kg.
<b>600</b>	2 x 3/4HP	R290A	3788W 4404Kcal	1800w hour	12SYR+H2O +SODA +2PREMIX (OPTIONAL)	150 lt.	70kg.
<b>PREMIUM</b> <b>600</b>	2 x 3/4HP	R290A	3788W 4404Kcal	1800w hour	12SYR+H2O +SODA +2PREMIX (OPTIONAL)	150 lt.	70kg.

**DIMENSIONS (Including pumps and / or wheels)**



ICE 150	ICE 150IP	ICE 250	ICE 600
A: 450 mm	A: 610 mm	A: 540 mm	A: 640 mm
B: 610 mm	B: 610 mm	B: 780 mm	B: 920 mm
C: 710 mm	C: 790 mm	C: 850 mm	C: 950 mm



ICEFREE



ICE FREE 250  
Premium version  
available



ICE FREE 600  
Premium version  
available

cooling capacity	temperature of drink IN/OUT	soda circuit pump optional speed control	cpu	voltage	carbonator	net weight	housing material
150lt. hour	25C° 4.4C°	400lt.	Standard alarm probes	220/240 50hz 110v-60hz 220v-60hz	2.7lt.	60kg	AISI430 or AISI304
250lt. hour	25C° 4.4C°	400lt.	Standard alarm probes	220/240 50hz 110v-60hz 220v-60hz	2.7lt.	75kg	AISI430 or AISI304
250lt. hour	25C° 4.4C°	400lt.	Premium alarm probes	220/240 50hz 110v-60hz 220v-60hz	2.7lt. with 2 pumps	75kg	AISI430 or AISI304
480lt. hour	25C° 4.4C°	400lt.	Premium alarm probes	220/240 50hz 110v-60hz 220v-60hz	2.7lt.	86kg	AISI430 or AISI304
480lt. hour	25C° 4.4C°	2 x 400lt.	Premium alarm probes	220/240 50hz 110v-60hz 220v-60hz	2 x 2.7lt.	86kg	AISI430 or AISI304

**Built-in Telemetry:** Built-in remote control of the sales volume & the technical performance of the unit.

**Standard & Premium line available (Premium only 250 and 600).**

**R290:** Eco-friendly High Efficiency R290 Embraco piston compressor.

**CPU:** Central Processing Unit for intelligent control of the electrical components with display screen.

**Switch kit for still products:** Available upon request (electrovalve, relay, pressure reducer, pressure guard).

**Optional Speed control soda recirculation pump:** Electromagnetic pump with continuous speed control system and self-adjusting RPM (from 1100 to 3500).

**Lower energy consumption:** Up to 25% less than a single speed pump.



**HE HighEfficiency**  
**R404A**

**free®**  
**R290**



	compressor	coolant gas	power W - Kcal	power consumption	coils	water tank	ice bank	cooling capacity	temperature of drink IN/OUT	rate of drink per minute	voltage	net weight	dimension A height B depth C width	recirculation pump
FREE 60 PRE-MIX	1/5HP	R290A	420W 363Kcal	192w hour	1-2 12-6mt	25lt.	10kg.	60lt. hour	25°C 6°C	5x200 cc	220/240 50hz 110v-60hz 220v-60hz	34kg	A 490mm B 560mm C 360mm	
FREE 90 PRE-MIX	1/4HP	R290A	422W 363Kcal	192w hour	1-4 17-9mt	36lt.	15kg.	90lt. hour	25°C 6°C	7x200 cc	220/240 50hz 110v-60hz 220v-60hz	35kg	A 720mm B 390mm C 390mm	
FREE 120 PRE-MIX	1/3HP	R290A	653W 561Kcal	325w hour	1-8 22-11mt	50lt.	20kg.	120lt. hour	25°C 6°C	10x200 cc	220/240 50hz 110v-60hz 220v-60hz	50kg	A 800mm B 450mm C 450mm	
HE 40	1/4HP	R404A	463W 398Kcal	260w hour	1-3 11-05mt	18lt.	9kg.	40lt. hour	25°C 6°C	2x200 cc	220/240 50hz 110v-60hz 220v-60hz	25kg	A 600mm B 350mm C 300mm	6/10
HE 60	1/4HP	R404A	463W 398Kcal	260w hour	1-4 12-6mt	25lt.	12kg.	60lt. hour	25°C 6°C	5x200 cc	220/240 50hz 110v-60hz 220v-60hz	34kg	A 490mm B 560mm C 360mm	8/10 Ø37.5
HE 90	1/3HP	R404A	530W 435Kcal	311w hour	1-4 17-9mt	36lt.	14kg.	90lt. hour	25°C 6°C	7x200 cc	220/240 50hz 110v-60hz 220v-60hz	35kg	A 720mm B 390mm C 390mm	8/13 Ø52.5
HE 100	1/3HP	R404A	530W 435Kcal	311w hour	1-4 17-9mt	36lt.	14kg.	100lt. hour	25°C 6°C	8x200 cc	220/240 50hz 110v-60hz 220v-60hz	35kg	A 490mm B 600mm C 400mm	8/13 Ø52.5
HE 120	1/2HP	R404A	756W 650Kcal	415w hour	1-8 22-11mt	50lt.	25kg.	120lt. hour	25°C 6°C	10x200 cc	220/240 50hz 110v-60hz 220v-60hz	50kg	A 800mm B 450mm C 450mm	8/13 Ø52.5
HE 140	1/2HP	R404A	756W 650Kcal	415w hour	1-8 22-11mt	50lt.	25kg.	140lt. hour	25°C 6°C	12x200 cc	220/240 50hz 110v-60hz 220v-60hz	50kg	A 530mm B 700mm C 450mm	8/13 Ø52.5
HE 250	3/4HP	R404A	1476W 1279Kcal	785w hour	1-8/10 23-15mt	90lt.	40kg.	250lt. hour	25°C 6°C	20x200 cc	220/240 50hz 110v-60hz 220v-60hz	75kg	A 870mm B 820mm C 520mm	10/18
HE 600	1 1/4HP	R404A	2017W 2236Kcal	1233w hour	1-12 23-20mt	150lt.	75kg.	480lt. hour	25°C 6°C	40x200 cc	220/240 50hz 110v-60hz 220v-60hz	86kg	A 870mm B 920mm C 600mm	10/18

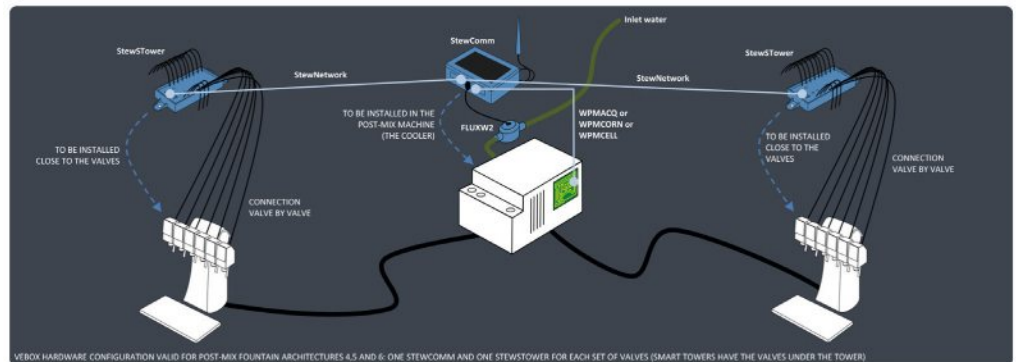
\*\* height including pump

HOUSING MATERIAL: Steel Plast orange or AISI430. HE250 and HE600 only AISI430

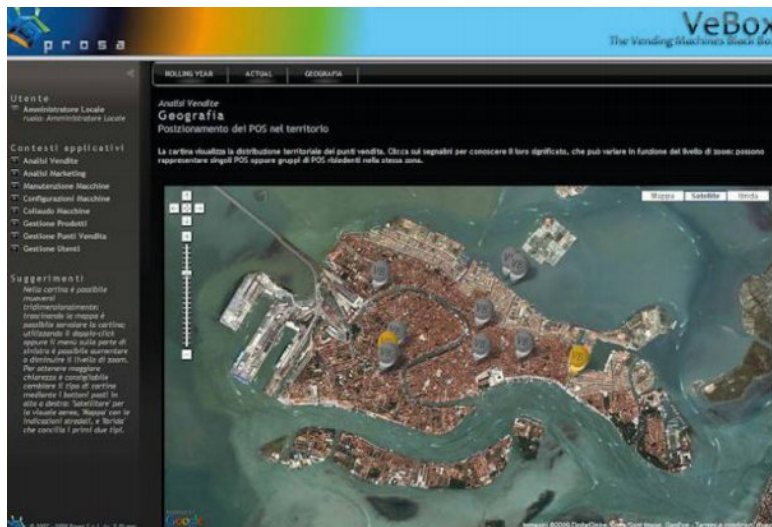
It gives functions to manage the supply of ingredients/products in a machine; it manages the cash accounting, divided per brand and per payment modality; it manages the workflow for asset technical maintenance, it is open to all the desired analysis and diagnosis.

### Where to install the VeBox Hardware

Here, only architecture 5 is illustrated, but the installations for 4 and 6 follow the same scheme.



VEBOX HARDWARE CONFIGURATION VALID FOR POST-MIX FOUNTAIN ARCHITECTURES 4,5 AND 6: ONE STEWCOMM AND ONE STEWSTOWER FOR EACH SET OF VALVES (SMART TOWERS HAVE THE VALVES UNDER THE TOWER)



### Assets Localization

VeBox helps in the localization of the machines.

### VeBox: other features

VeBox is intended to be a total asset management and analysis system:

## CENTRAL PROCESSING UNIT



Tailor-made Central Processing Unit by Prosa (StewPowUC) to be connected to Telemetry control box (StewCom).

Automatic control of ice bank and carbonation.

**Standard** alarm probes to control water inlet pressure, cooling gas temperature, carbonation pump temperature, water bath temperature.

Additional **Premium** alarm probes to control soda pump

temperature, soda return line temperature, agitator motor temperature and compressor temperature.

**Optional** alarm probes to control CO2 bottle, soda recirculation pressure and still water pressure.

Powerful control board to handle customised control algorithms for further energy savings. Connection with user interface featuring a 3,5" display with touch screen.



# VIN SERVICE DISPENSING GROUP

Via G. Falcone 26/34 - 24050 Zanica (BG) Italy

Phone: +39 035 672 361 Fax: +39 035 672 699

info@vinservice.it - www.vinservice.it

# VINSERVICE®



facebook



follow us



# pepsi®

Vin Service si riserva il diritto di modificare i prodotti illustrati in qualsiasi momento  
Vin Service reserves the right to change at any time the products shown